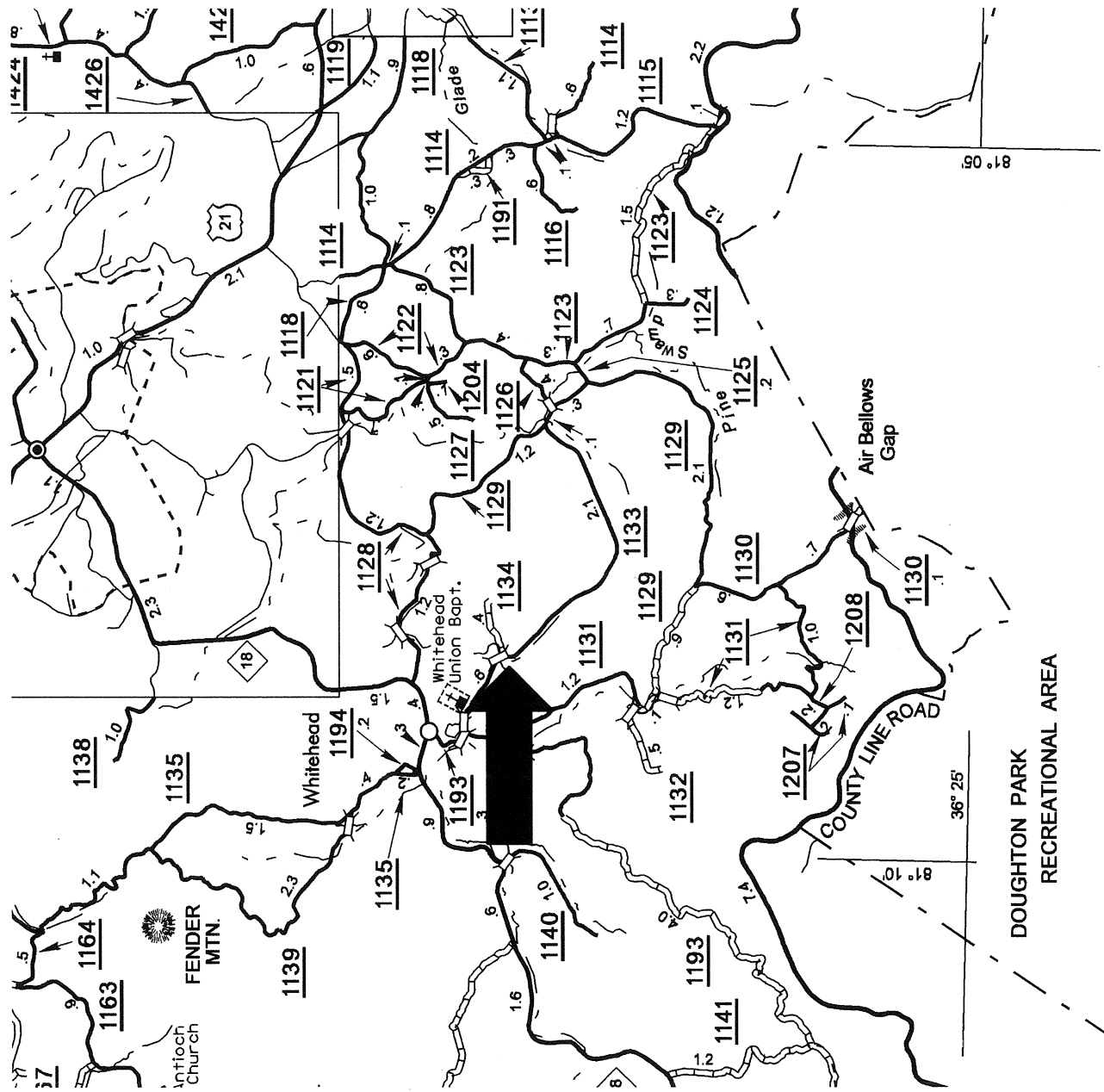
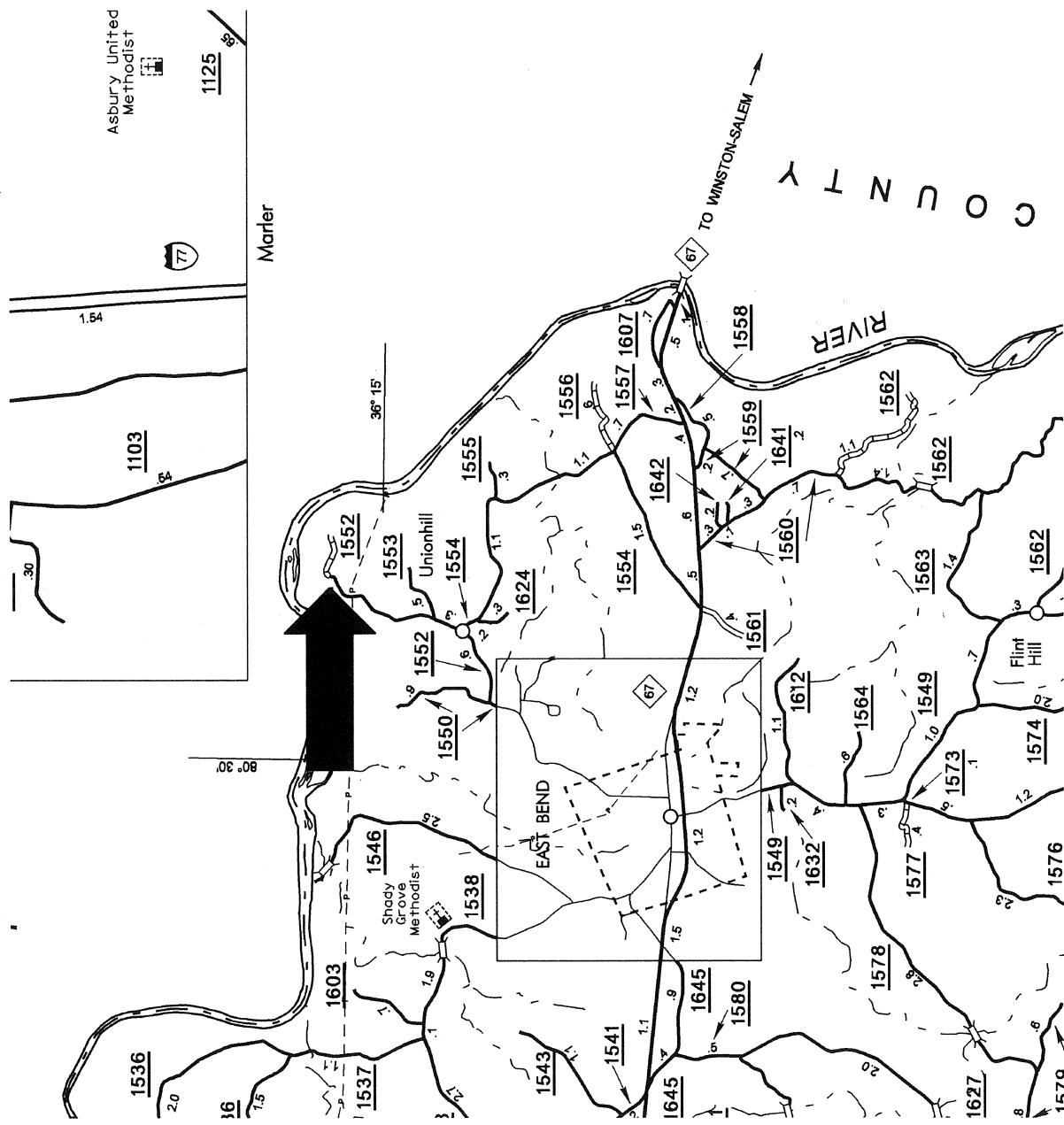


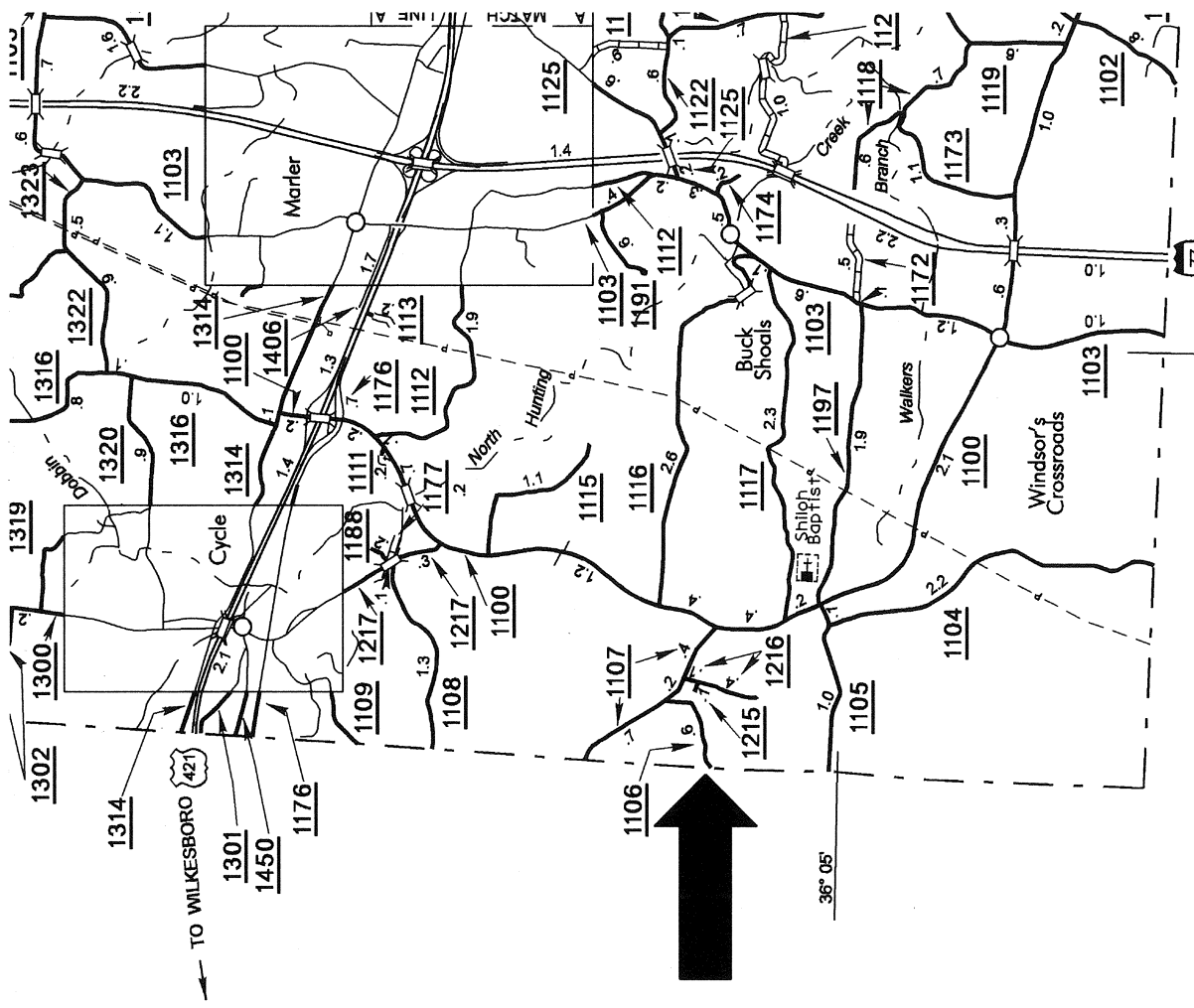
**MAP 1**  
**SR 1134 HAROLD ROAD**  
**ALLEGHANY**



**MAP 2**  
**SR 1552 UNION HILL EXTENSION**  
**YADKIN**



MAP 3  
SR 1106 BOB'S LAKE ROAD  
YADKIN



W I L K E S

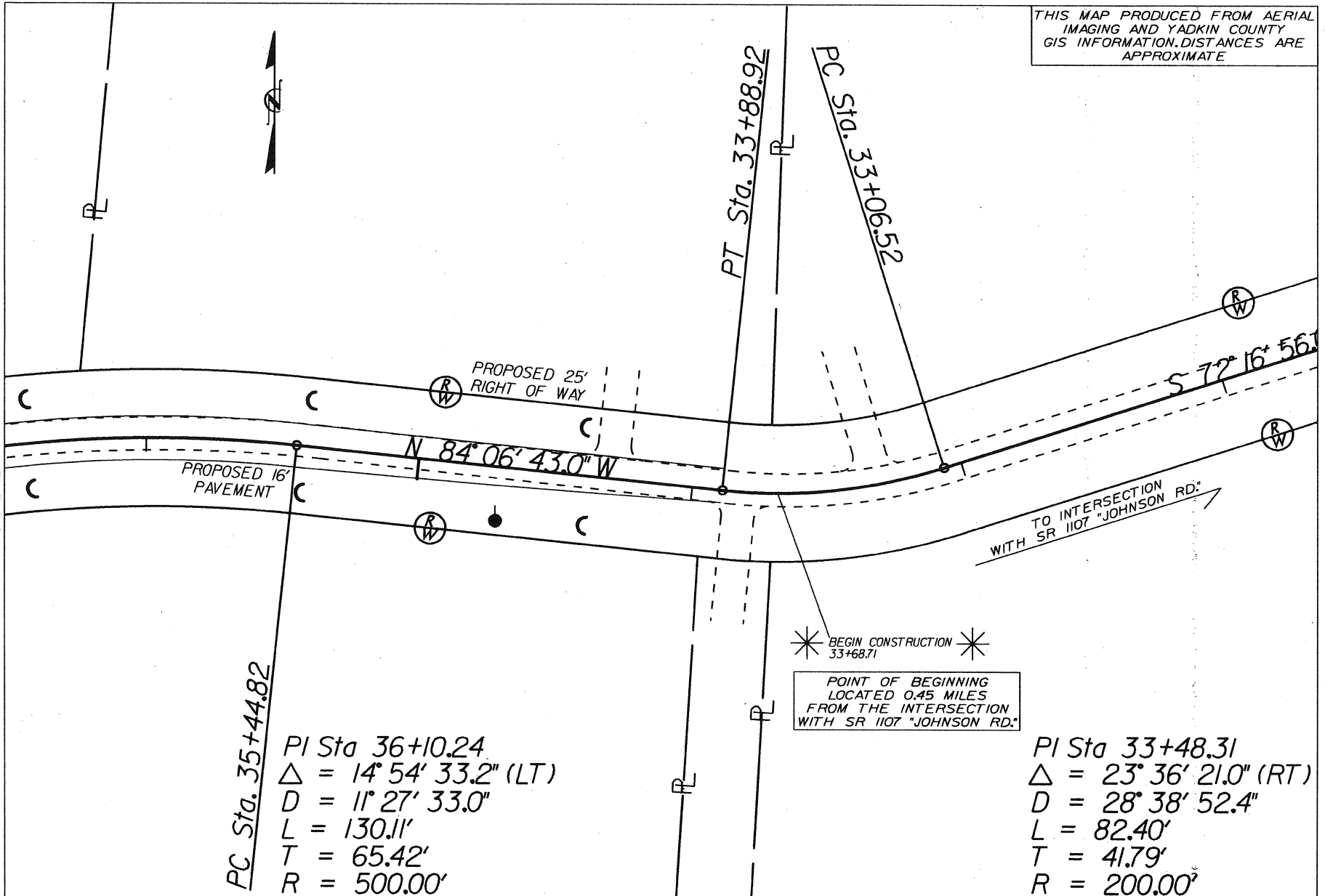
REVISIONS

PROJECT REFERENCE NO. SHEET NO.

02

THIS MAP PRODUCED FROM AERIAL IMAGING AND YADKIN COUNTY GIS INFORMATION. DISTANCES ARE APPROXIMATE

MATCHLINE SEE SHEET #3



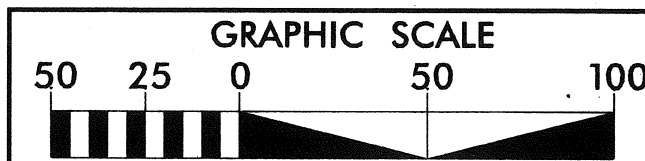
PC Sta. 35+44.82

PI Sta 36+10.24  
 $\Delta = 14^\circ 54' 33.2''$  (LT)  
 $D = 11^\circ 27' 33.0''$   
 $L = 130.11'$   
 $T = 65.42'$   
 $R = 500.00'$

BEGIN CONSTRUCTION  
 33+68.71

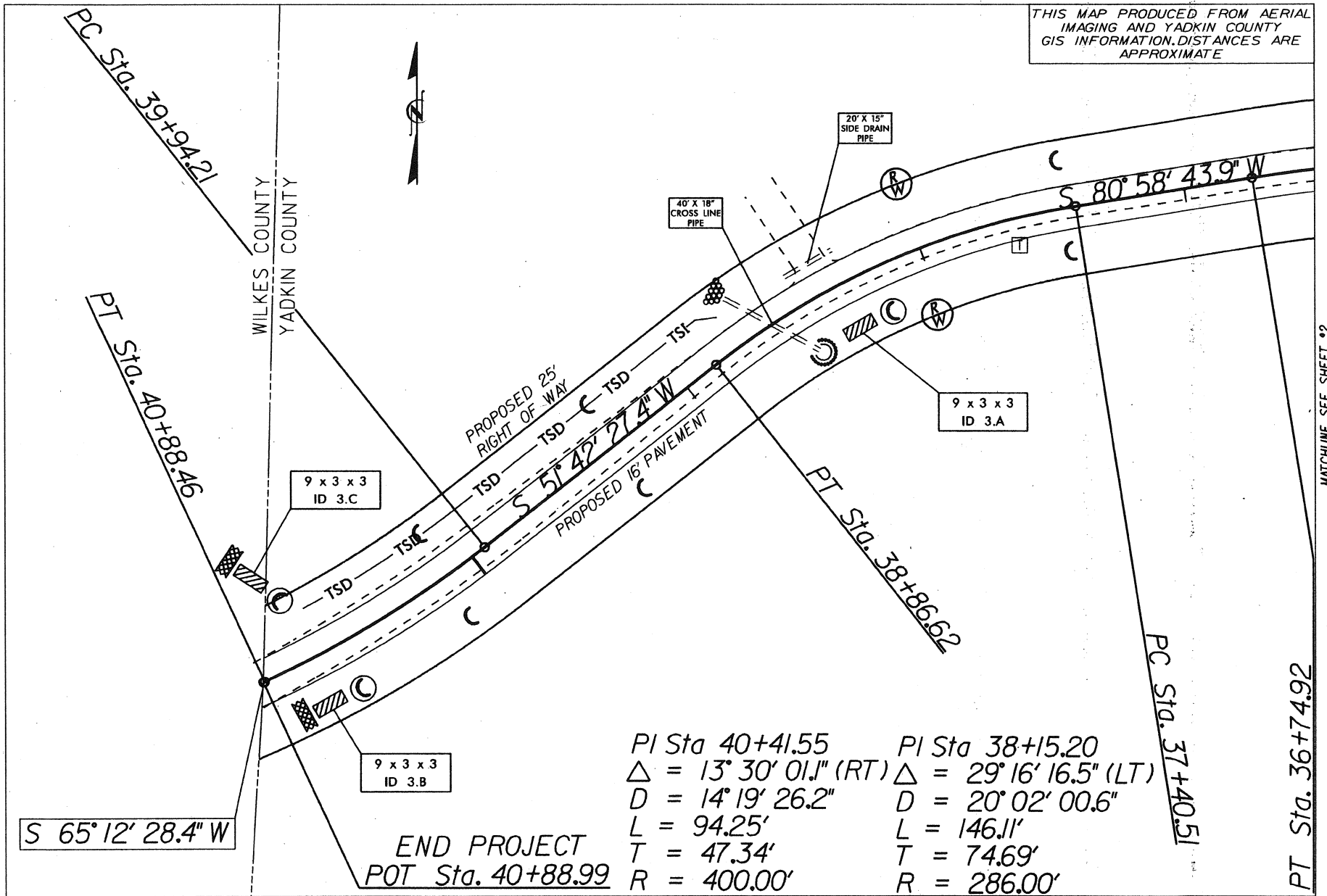
POINT OF BEGINNING  
 LOCATED 0.45 MILES  
 FROM THE INTERSECTION  
 WITH SR 1107 "JOHNSON RD."

PI Sta 33+48.31  
 $\Delta = 23^\circ 36' 21.0''$  (RT)  
 $D = 28^\circ 38' 52.4''$   
 $L = 82.40'$   
 $T = 41.79'$   
 $R = 200.00'$



LOCATION:	" BOB'S LAKE RD."
COUNTY:	SR 1106 YADKIN
TOWNSHIP:	????????
DESIGNED BY:	JDW
CHECKED BY:	DATE: 3/23/12

THIS MAP PRODUCED FROM AERIAL IMAGING AND YADKIN COUNTY GIS INFORMATION. DISTANCES ARE APPROXIMATE

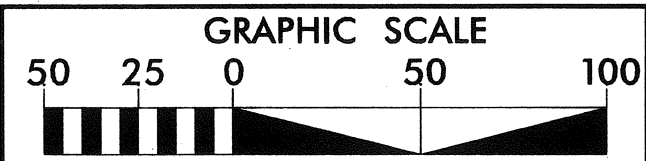


MATCHLINE SEE SHEET \*2

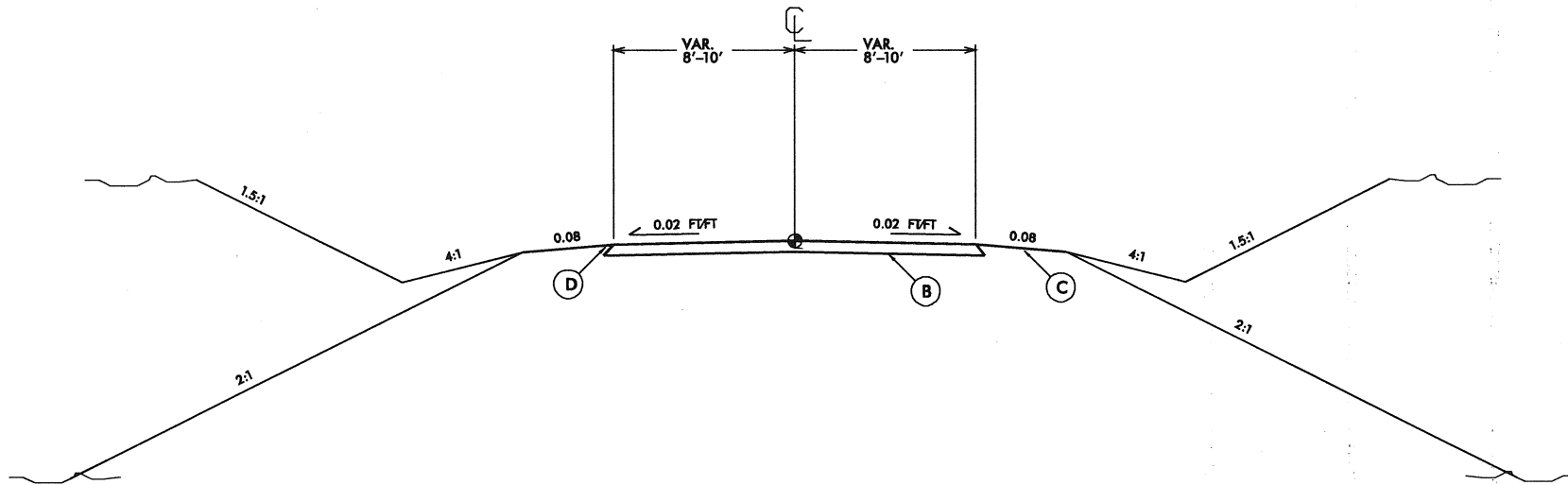
S 65°12'28.4" W

END PROJECT  
POT Sta. 40+88.99

PI Sta 40+41.55	PI Sta 38+15.20
Δ = 13° 30' 01.1" (RT)	Δ = 29° 16' 16.5" (LT)
D = 14° 19' 26.2"	D = 20° 02' 00.6"
L = 94.25'	L = 146.11'
T = 47.34'	T = 74.69'
R = 400.00'	R = 286.00'



LOCATION: " BOB'S LAKE RD."  
 COUNTY: SR 1106  
 YADKIN  
 TOWNSHIP: ???????  
 DESIGNED BY: JDW  
 CHECKED BY: DATE: 3/23/12



**B** 8" (compacted) ABC

**C** Shoulder varies: Cut side = 4' shoulder on .08 ft/ft  
 transition to a 4:1 slope for a distance of 4'  
 to center of the ditch line  
 Fill side = 6' to shoulder break

**D** Base should be 1' wider than  
 overall proposed road width

PROJECT NO.	SHEET NO.	TOTAL NO.
11-01-717		

### SUMMARY OF QUANTITIES

PROJECT NO	COUNTY	MAP NO	ROUTE	DESCRIPTION	TYP NO	LENGTH MI	WIDTH FT	AGGREGATE BASE COURSE TONS	CONDITIONING EXISTING BASE SYD	INCIDENTAL STONE BASE TONS	AST MAT & SPLIT SEAL SYD	* GRADING LS	18" DRAINAGE PIPE LFT	15" DRAINAGE PIPE LFT	SILT EXCAVATION CYD	WATTLES LFT	POLYACLYRAMIDE LB	MATTING FOR EROSION SYD	SEEDING & MULCHING ACR
11C.003070	Alleghany	1	SR 1134	FROM SR 1133 to END STATE MAINTENANCE	1	0.37	18	100	4124	16	3907								
TOTAL FOR PROJ NO. ALLEGHANY						0.37		100	4124	16	3907								
11C.099081	Yadkin	2	SR 1552	FROM END PAVEMENT TO END STATE MAINTENANCE	1	0.34	16	100	3391	16	3192	1							0.12
11C.099007	Yadkin	3	SR 1106	FROM WILKES COUNTY LINE 720' WEST	1	0.14	16	600	1396	16	1314		40	20	17	140	4	1,535	0.20
TOTAL FOR PROJ NO. YADKIN						0.48		700	4787	32	4506	1	40	20	17	140	4	1,535	0.32
GRAND TOTAL						0.85		800	4787	48	8413	1	40	20	17	140	4	1,535	0.32

\* SR 1106 Grading consists of widening 2' +/- , establishing ditch lines and dressing slopes for a total distance of 720'.

\* SR 1552 Grading consists of sawing and removing 520 syd of existing pavement and dressing area.

